



# **AWFIS SPACE SOLUTIONS CASE STUDY**



## OVERVIEW

Awfis is a shared working space facilitator. What this basically means is that they provide a shared office space for companies who either want a modern workspace at a prime location or free lancers who want to network while they work. They have 30 centres in 10 cities with over 5000 members and 500 companies as partners. They were funded by Sequoia India for \$ 20 Million in 2017 and is on its way to be India's largest shared working space provider.



## REQUIREMENT

Awfis wanted to deploy a wireless internet connection for its occupants at various locations. They required a solution which could function 24x7 and handle a load of 10000 users daily across over 30 locations in India. They also needed to integrate the authentication with their own database and provide users to login in automatically on any Awfis location if they had registered once.



## HOW WE HELPED

- ▀ Reduced OpEx and CapEx
- ▀ Visitors were given access if they had registered once at any location
- ▀ Easy tracking of number of users, bandwidth control, policy management and reporting
- ▀ Ability to manage 10000+ users who transfer around 3 TB of data daily from over 30 locations each
- ▀ Large volume of data to perform analytics
- ▀ Integrated BYOD support
- ▀ Simplified and centralized network management
- ▀ A reduction in network fault calls
- ▀ Ability to remotely control, monitor and troubleshoot
- ▀ Ubiquitous Wi-Fi coverage and stronger signal
- ▀ The ability to support high density environments with more concurrent users per access point
- ▀ Access point Monitoring
- ▀ Proximity marketing and ability to send push notifications and ads

# AWFIS SPACE SOLUTIONS CASE STUDY

*Awfis is a pioneer in providing young India entrepreneurs with the ability to share a modern and advanced workspace in the growing years of the company. To facilitate this, they decided to deploy an Advanced and Seamless internet connection for its occupants.*

With India now embarking on developing new and innovative ideas to support its various schemes like 'Make in India', there is a boom in the number of entrepreneurs in the country. Awfis helps these new entrepreneurs by providing an affordable and

# CASE STUDY

## AWFIS SPACE SOLUTIONS

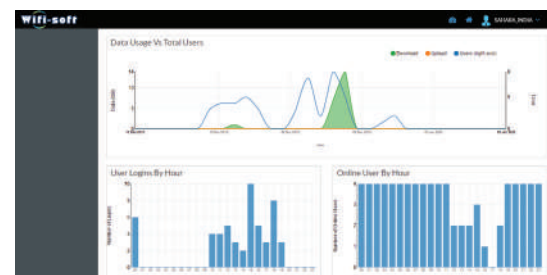
technologically advanced work environment. Their founder, Mr Amit Ramani, wanted to promote a 'sharing economy' and came up with this idea in 2015. In a short span of time, they have become the leading players in the industry. Occupants are given the option to buy/ lease a space or work from areas in the cafes and restaurants. They also have 100+ partners that give offers to the Awfis occupants.

This brings us to their requirement. To be able to cater to such a large number of occupants and to keep them up to date on the ever changing offers promoted by Awfis's partners, they needed a reliable and scalable solution that could be installed at a low cost.

A brief about their requirement is as below,

- Handle 10000 users daily
- Competence to manage over 3 TB of data transfer per day per location securely
- Integrate authentication with their database

- Send push notifications and ads for offers to occupants
- 24x7 operation as they offer flexi work timings
- Employees had to get access across all locations if they were registered at any one location



# CASE STUDY

## AWFIS SPACE SOLUTIONS

### Solution details

1. Ability to manage more than 10000 plus users on a daily basis
2. Secure solution to delivery over 20 TB of daily data transfer per location
3. The authentication mechanism was linked to the company's database to provide a more reliable network
4. Awfis partners with other companies to offer many promotions to its occupants. Push messages and ads were sent to the occupants as per their location, company of employment etc.
5. The network is so stable that it can operate 24x7 without any downtime, helping users to work any time of the day.
6. Once a user is registered at any location, they are automatically connected to the WiFi at any Awfis location
7. Once an employee leaves the organisation or discontinues its tenure with Awfis, they are automatically disconnected and their

8. registration is cancelled
9. Bandwidth allocation is done to promote fair usage
10. URLs of unwanted and mature content is blocked
11. For users who have not purchased or leased a space and work from cafes and restaurants were to be disconnected after a pre-defined time.
12. BYOD support was provided to help people use a variety of devices with ease

*“ I love the whole idea behind AWFIS. It is lively and inspiring place to work. Moreover they do not compromise the services. like internet. We have great high speed internet connection which helps me do my job 24x7.*

*- Kavita Deshpande  
Freelancer & Content Writer*

